

# How to download and install Development Desktop Software DD2.0\_Ulx.x

Bosch Sensortec



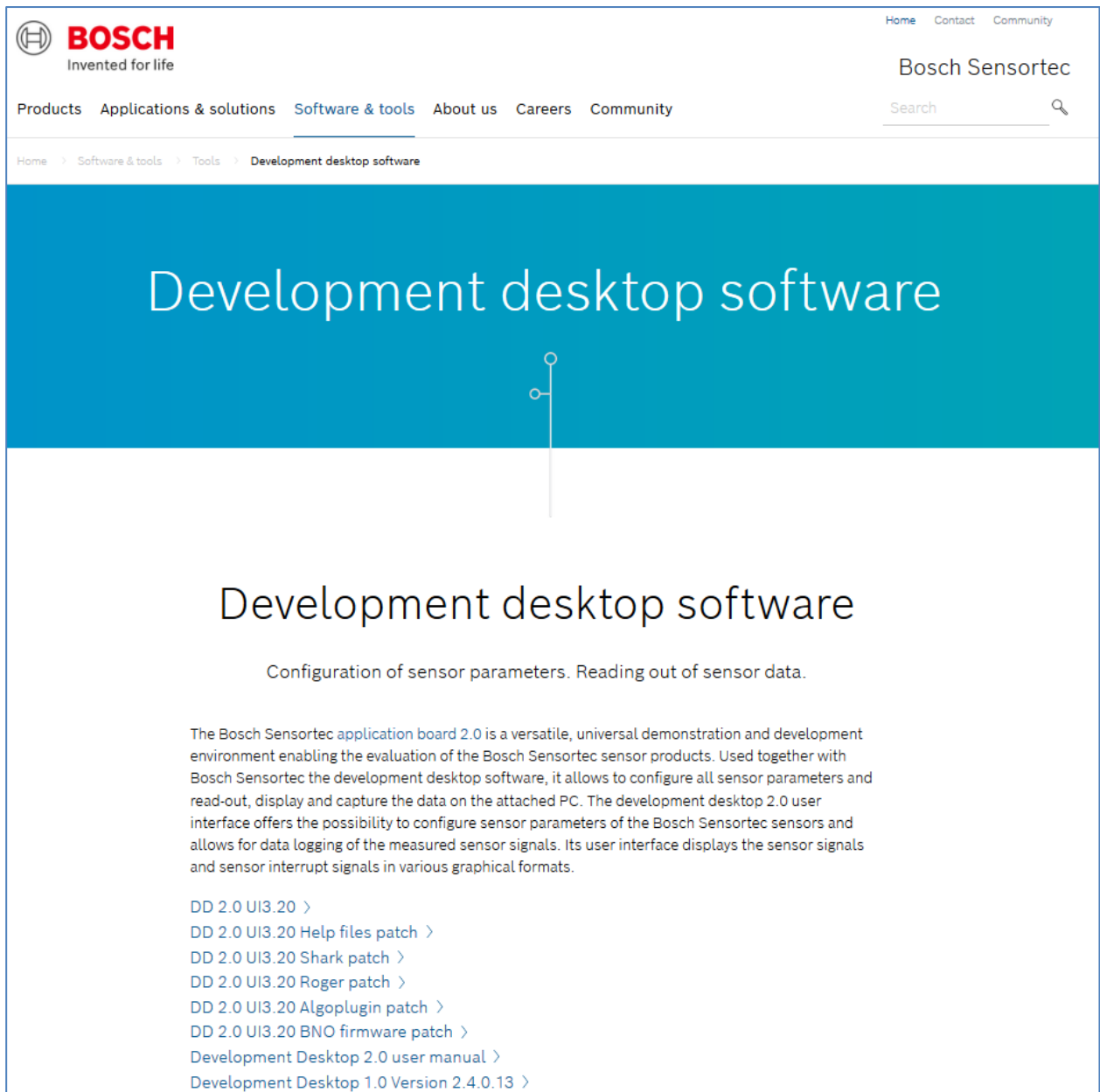
**BOSCH**  
Invented for life

## Table of contents

<b>1</b>	<b>DOWNLOAD .....</b>	<b>3</b>
<b>2</b>	<b>INSTALL .....</b>	<b>4</b>
<b>3</b>	<b>UPGRADE APP2.0 FW.....</b>	<b>6</b>
<b>4</b>	<b>LEGAL DISCLAIMER .....</b>	<b>11</b>
4.1	ENGINEERING SAMPLES .....	11
4.2	PRODUCT USE.....	11
4.3	APPLICATION EXAMPLES AND HINTS.....	11
<b>5</b>	<b>DOCUMENT HISTORY AND MODIFICATION .....</b>	<b>12</b>

## 1 Download

The Development Desktop GUI software works with the application base board (APP2.0) and all MEMS sensors' shuttle boards. The current release of the Development Desktop GUI software is DD2.0\_UI3.20 that supports both Windows 32-bit and 64-bit OS, such as Windows 7, 8 and 10, etc. Users can download DD2.0\_UI3.20 SW and "UI3.20 Help files patch" online at [https://www.bosch-sensortec.com/software-tools/tools/development-desktop-software/#development\\_desktop\\_software](https://www.bosch-sensortec.com/software-tools/tools/development-desktop-software/#development_desktop_software) as shown below.



**BOSCH**  
Invented for life

Home Contact Community

Bosch Sensortec

Products Applications & solutions **Software & tools** About us Careers Community

Home > Software & tools > Tools > Development desktop software

# Development desktop software

Configuration of sensor parameters. Reading out of sensor data.

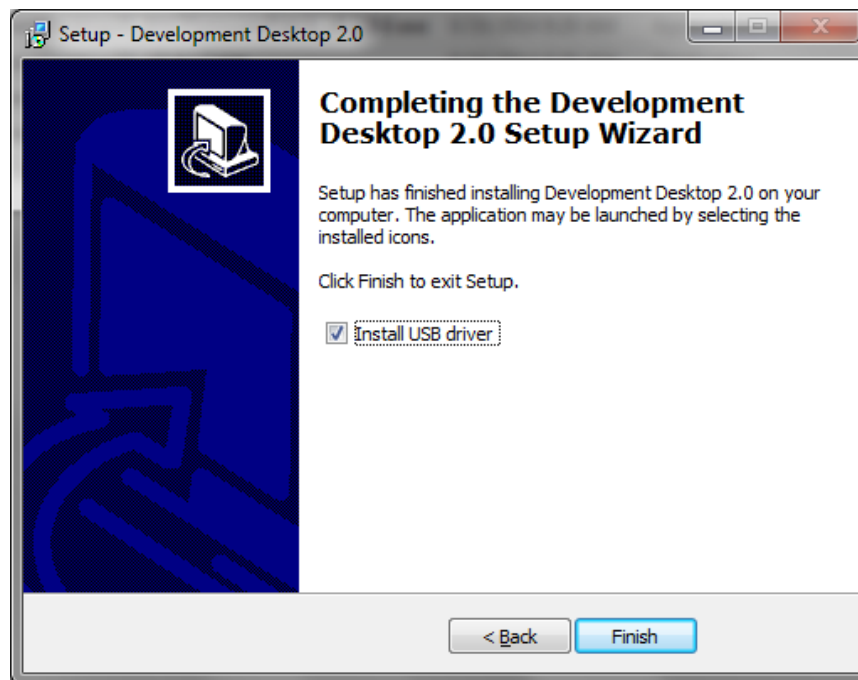
The Bosch Sensortec [application board 2.0](#) is a versatile, universal demonstration and development environment enabling the evaluation of the Bosch Sensortec sensor products. Used together with Bosch Sensortec the development desktop software, it allows to configure all sensor parameters and read-out, display and capture the data on the attached PC. The development desktop 2.0 user interface offers the possibility to configure sensor parameters of the Bosch Sensortec sensors and allows for data logging of the measured sensor signals. Its user interface displays the sensor signals and sensor interrupt signals in various graphical formats.

- [DD 2.0 UI3.20 >](#)
- [DD 2.0 UI3.20 Help files patch >](#)
- [DD 2.0 UI3.20 Shark patch >](#)
- [DD 2.0 UI3.20 Roger patch >](#)
- [DD 2.0 UI3.20 Algoplugin patch >](#)
- [DD 2.0 UI3.20 BNO firmware patch >](#)
- [Development Desktop 2.0 user manual >](#)
- [Development Desktop 1.0 Version 2.4.0.13 >](#)

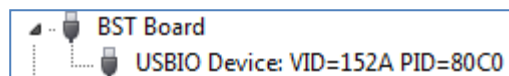


## 2 Install

**Step 1:** Double click the “DevelopmentDesktop20\_V3.20.exe” that you just downloaded from Bosch Sensortec website. Follow the instructions to finish the installation. Check the “Install USB driver” checkbox as shown below to install the USB driver automatically.



**Step 2:** Plug the USB cable from the APP2.0 board to a USB port of your PC. If the USB driver has been installed, then from Device Manager, the APP2.0 board should be recognized as below.



If APP2.0 board is not recognized, then you may try another USB port of your PC or you try another PC.

**Step 3:** If you need the user manuals for each sensor shuttle board, then you can download the “DevelopmentDesktop20\_V320\_HelpfilesPatch.exe” file from the website and double click it to install the user manuals.



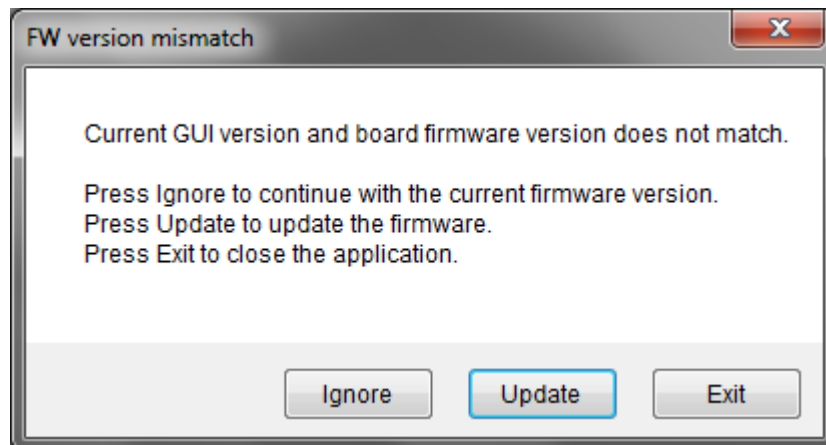
These user manuals can be found in the folder <<C:/Program Files/Bosch Sensortec/Development Desktop 2.0/>> as shown below

Name	Date modified	Type	Size
DD2.0 connection troubleshoot document.pdf	7/14/2017 4:16 PM	Adobe Acrobat Document	499 KB
DD2.0_BHyxxx.pdf	6/7/2017 6:46 PM	Adobe Acrobat Document	2,924 KB
DD2.0_BMA4xy.pdf	6/7/2017 6:46 PM	Adobe Acrobat Document	1,491 KB
DD2.0_BMAxxx.pdf	6/7/2017 6:46 PM	Adobe Acrobat Document	540 KB
DD2.0_BMCxxx.pdf	6/7/2017 6:46 PM	Adobe Acrobat Document	603 KB
DD2.0_BMGxxx.pdf	6/7/2017 6:46 PM	Adobe Acrobat Document	534 KB
DD2.0_BMI055.pdf	6/7/2017 6:46 PM	Adobe Acrobat Document	687 KB
DD2.0_BMI160.pdf	6/7/2017 6:46 PM	Adobe Acrobat Document	1,191 KB
DD2.0_BMMxxx.pdf	6/7/2017 6:46 PM	Adobe Acrobat Document	522 KB
DD2.0_BMPxxx.pdf	6/7/2017 6:46 PM	Adobe Acrobat Document	732 KB
DD2.0_BMX055.pdf	6/7/2017 6:46 PM	Adobe Acrobat Document	820 KB
DD2.0_BNO055_USB_Stick_Manual.pdf	6/7/2017 6:46 PM	Adobe Acrobat Document	574 KB
DD2.0_BNOxxx.pdf	6/7/2017 6:46 PM	Adobe Acrobat Document	1,737 KB

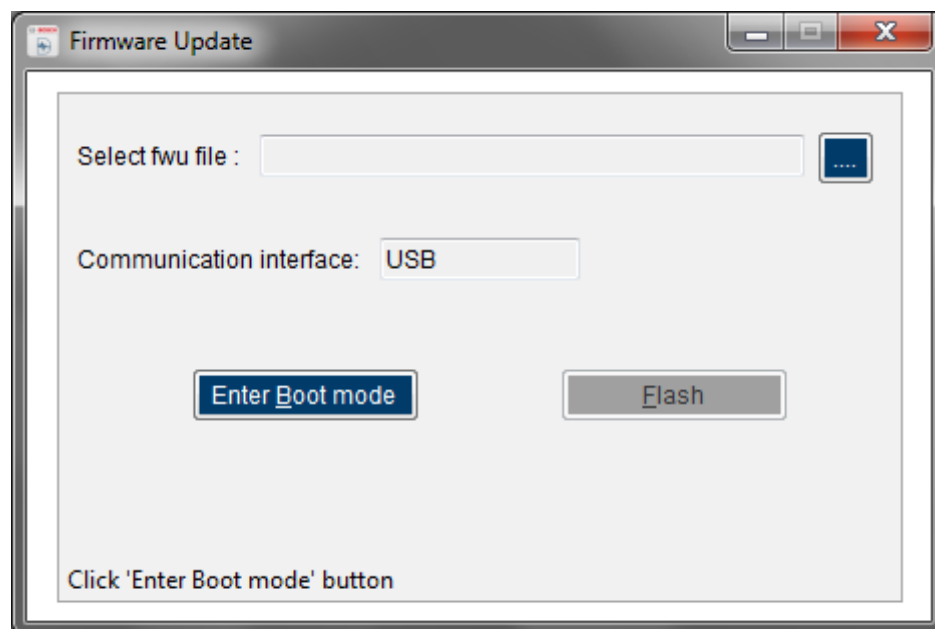


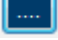
### 3 Upgrade APP2.0 FW

**Step 1:** When you launch DD2.0\_UI3.20 GUI SW the first time, if the firmware (FW) version of the APP2.0 board doesn't match current GUI version, then a dialog will pop up as shown below.



**Step 2:** Click "Update" button to upgrade the FW of APP2.0 application board. A new dialog will pop up as shown below. This is one time process.

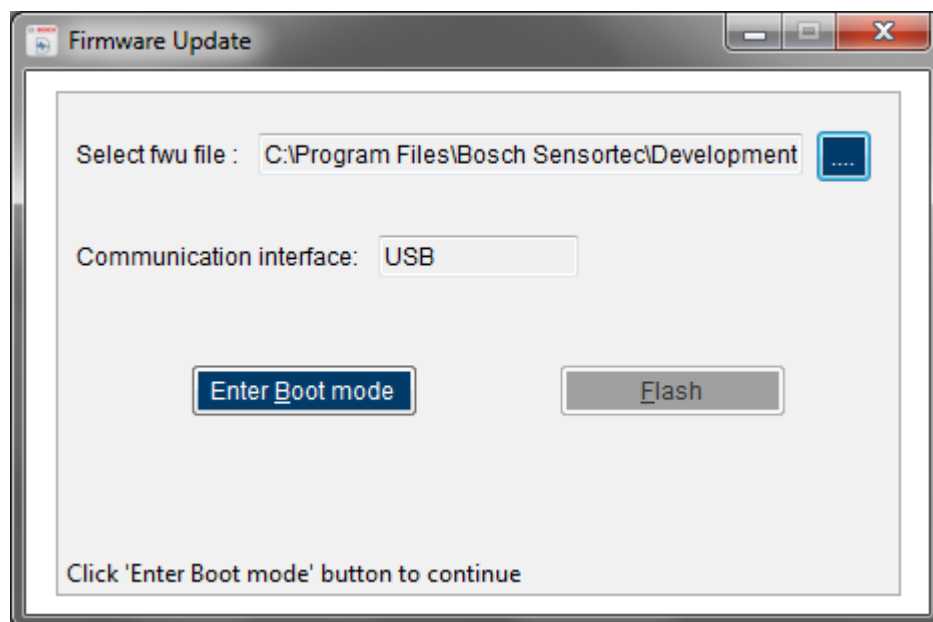


**Step 3:** Click  button to locate the FW "DevelopmentDesktop\_2.0\_Firmware\_V3.3.fwu2" file as shown below.

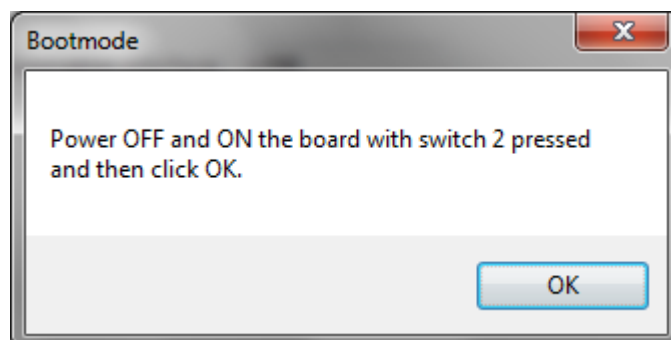


	Name	Date modified	Type	Size
Bosch Sensortec				
Development Desktop 2.0				
BMAConfigurationFiles				
BME680				
BMIConfigurationFiles				
Bootupdate				
Firmware				
Resources				
SensorConfigurations				
USB Driver				
UserpApplicationBoard				
	APP3.0	12/16/2019 9:54 AM	File folder	
	BHA250	12/16/2019 9:54 AM	File folder	
	BHA250B	12/16/2019 9:54 AM	File folder	
	BHA260	12/16/2019 9:54 AM	File folder	
	BHI160	12/16/2019 9:54 AM	File folder	
	BHI160B	12/16/2019 9:54 AM	File folder	
	BHI260	12/16/2019 9:54 AM	File folder	
	BNOinUSBStick_V1.4.fwu3	2/12/2018 2:48 PM	FWU3 File	32 KB
	DevelopmentDesktop_2.0_Firmware_V1.9.fwu	2/12/2018 2:48 PM	FWU File	112 KB
	DevelopmentDesktop_2.0_Firmware_V3.3.fwu2	10/22/2019 6:04 PM	FWU2 File	181 KB

**Step 4:** Then the dialog will look like below.



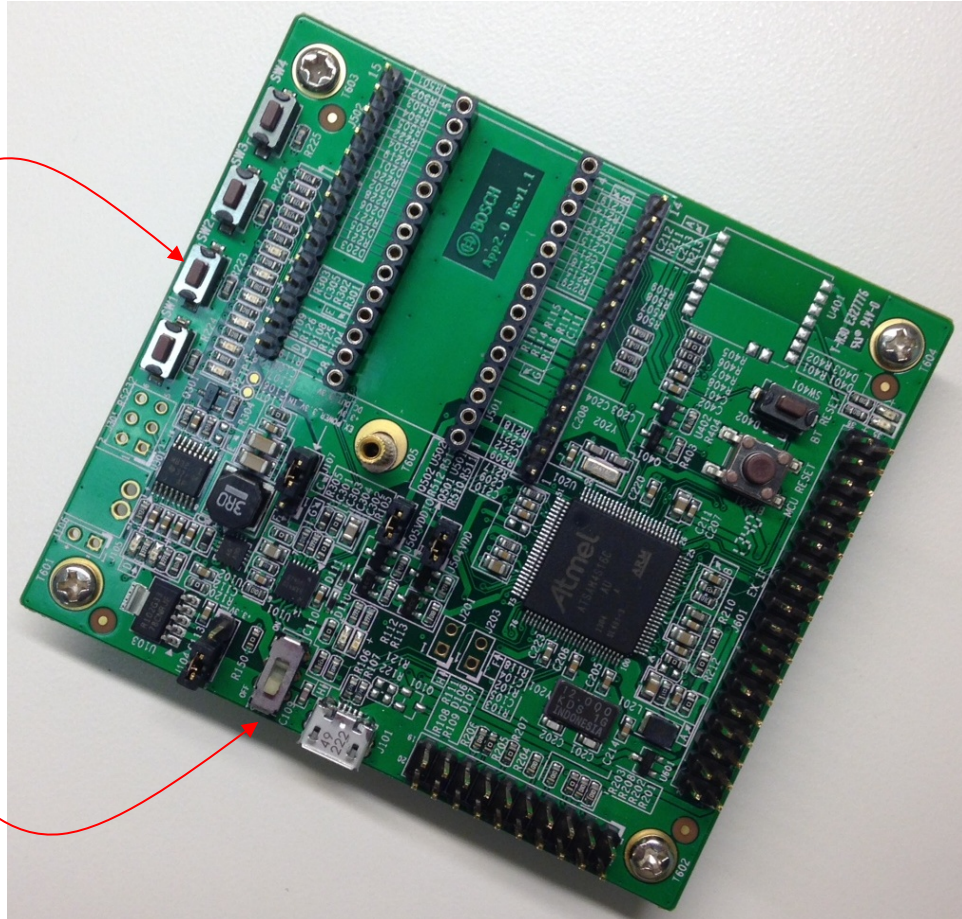
**Step 5:** Then click “Enter Boot mode” button, a new dialog will pop up as shown below.



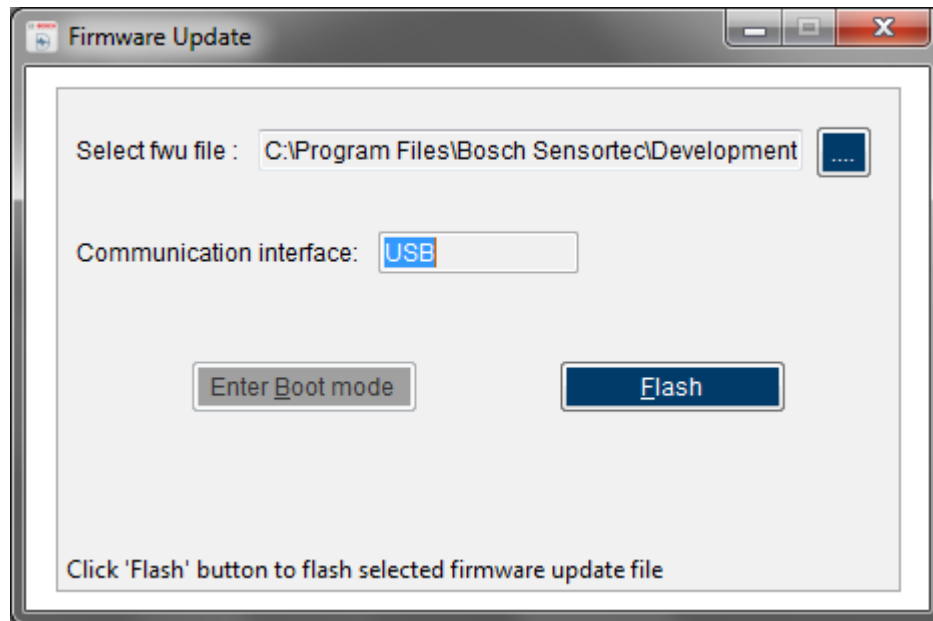
**Step 6:** The On/Off switch and switch 2 pushbutton are located on the APP2.0 board as shown below. Power off and then power on the APP2.0 board with switch 2 pressed. Then click OK button and then release switch 2.

Switch 2

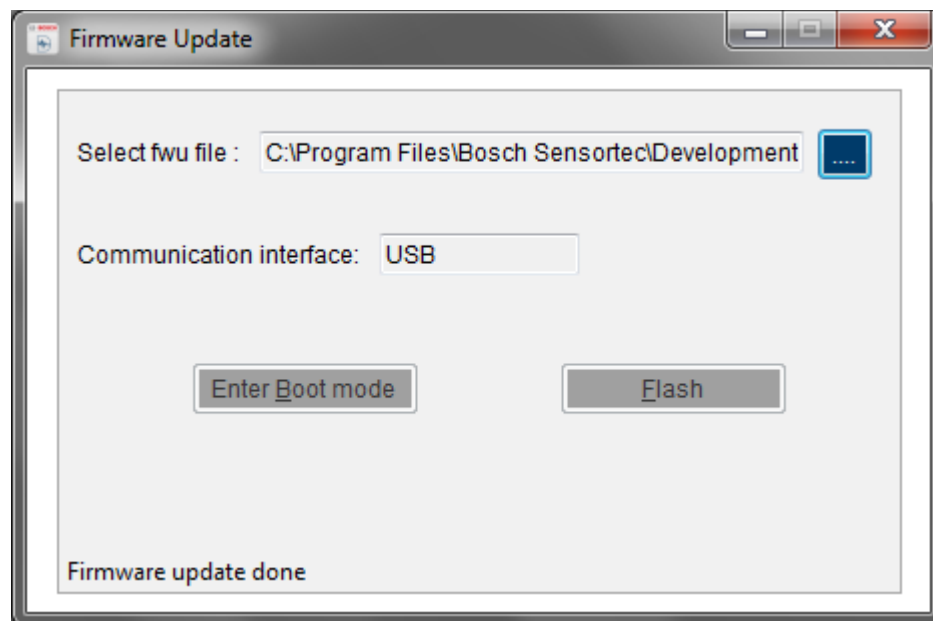
On/Off switch



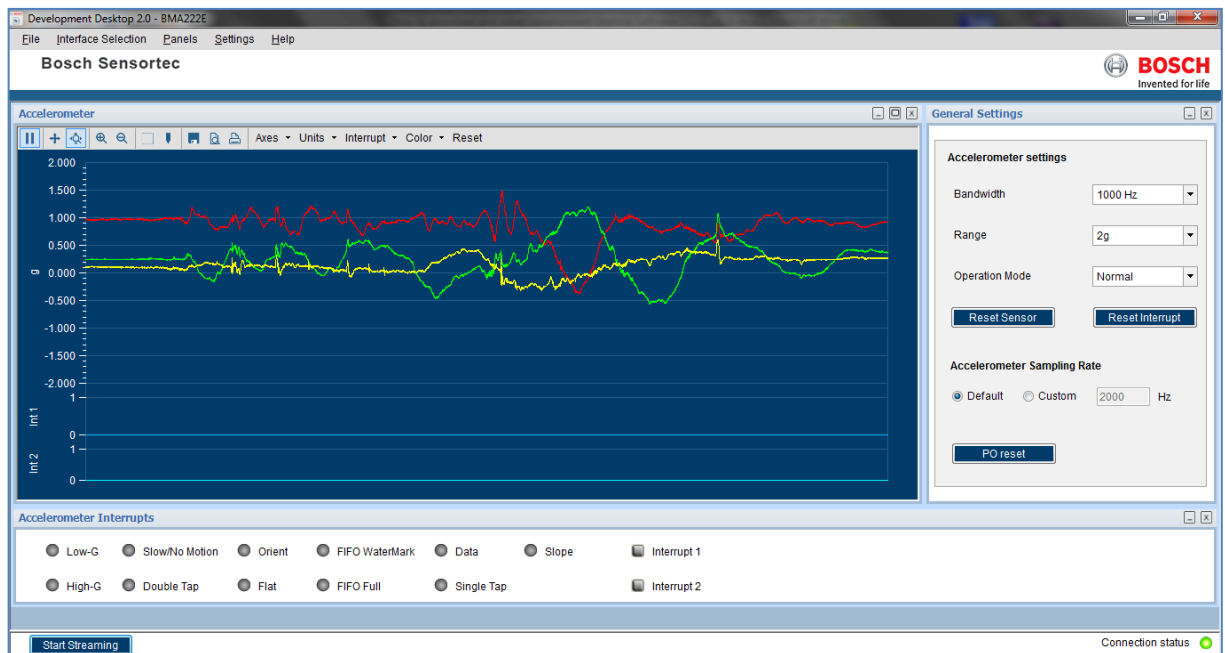
**Step 7:** After clicking “OK” button in the previous step, the dialog will look like below where the “Flash” button becomes valid.



**Step 8:** Click the “Flash” button to finish upgrading the FW of APP2.0 as shown below.



**Step 9:** Switch off the APP2.0 board and then switch it on. Restart the DD2.0\_UI3.20 GUI SW. It should work properly as shown below.



**Step 10:** Click menu “Help→About Development Desktop”. The FW version of the APP2.0 board has been upgraded to 2.0 as shown below.

If the “SW ID” version as shown above is smaller than 2.3, then go to Step 2 in Section 3 to update the FW of the APP2.0 .





## 4 Legal disclaimer

### 4.1 Engineering samples

Engineering Samples are marked with an asterisk (\*) or (e) or (E). Samples may vary from the valid technical specifications of the product series contained in this data sheet. They are therefore not intended or fit for resale to third parties or for use in end products. Their sole purpose is internal client testing. The testing of an engineering sample may in no way replace the testing of a product series. Bosch Sensortec assumes no liability for the use of engineering samples. The Purchaser shall indemnify Bosch Sensortec from all claims arising from the use of engineering samples.

### 4.2 Product use

Bosch Sensortec products are developed for the consumer goods industry. They may only be used within the parameters of this product data sheet. They are not fit for use in life-sustaining or security sensitive systems. Security sensitive systems are those for which a malfunction is expected to lead to bodily harm or significant property damage. In addition, they are not fit for use in products which interact with motor vehicle systems.

The resale and/or use of products are at the purchaser's own risk and his own responsibility. The examination of fitness for the intended use is the sole responsibility of the Purchaser.

The purchaser shall indemnify Bosch Sensortec from all third party claims arising from any product use not covered by the parameters of this product data sheet or not approved by Bosch Sensortec and reimburse Bosch Sensortec for all costs in connection with such claims.

The purchaser must monitor the market for the purchased products, particularly with regard to product safety, and inform Bosch Sensortec without delay of all security relevant incidents.

### 4.3 Application examples and hints

With respect to any examples or hints given herein, any typical values stated herein and/or any information regarding the application of the device, Bosch Sensortec hereby disclaims any and all warranties and liabilities of any kind, including without limitation warranties of non-infringement of intellectual property rights or copyrights of any third party. The information given in this document shall in no event be regarded as a guarantee of conditions or characteristics. They are provided for illustrative purposes only and no evaluation regarding infringement of intellectual property rights or copyrights or regarding functionality, performance or error has been made.



## 5 Document history and modification

Rev. No	Chapter	Description of modification/changes	Date
1.0		Document creation for DD2.0_UI3.0.1.6 SW download	December 1 <sup>st</sup> , 2014
1.1		Update to DD2.0_UI3.1.2.1	May 22 <sup>nd</sup> , 2015
	Section 2 Step 4	New screenshot that shows more PDF user manuals are available	
	Section 3 Step 10	New screenshot that shows “About Development Desktop 2.0”	
1.2		Update to DD2.0_UI3.1.2.7	Oct. 30 <sup>th</sup> , 2015
	Section 3 Step 10	New screenshot that shows “About Development Desktop 2.0”	
1.3	Section 1	No need to register an account to download the DD2.0 SW Update to DD2.0_UI3.3.6.0	Feb. 2 <sup>nd</sup> , 2016
	Section 3 Step 10	New screenshot that shows “About Development Desktop 2.0”	
1.4	Section 1	Update to DD2.0_UI3.3.6.0	Jul. 22 <sup>th</sup> , 2016
	Section 2	Help files need to be downloaded and installed separately	
	Section 3 Step 10	New screenshot that shows “About Development Desktop 2.0”	
1.5	Section 1	Update to DD2.0_UI3.7.0.0	Apr. 26 <sup>th</sup> , 2017
	Section 3 Step 10	New screenshot that shows “About Development Desktop 2.0”	
1.6	Section 1	Update to DD2.0_UI3.8.0.0	May 26 <sup>th</sup> , 2017
	Section 3 Step 10	New screenshot that shows “About Development Desktop 2.0”	
1.7	Section 1	Update to DD2.0_UI3.9.0.0	July 10 <sup>th</sup> , 2017
	Section 3 Step 10	New screenshot that shows “About Development Desktop 2.0”	



1.8	Section 1	Update to DD2.0_UI3.10.0.0	January 22nd, 2018
	Section 3 Step 10	New screenshot that shows "About Development Desktop 2.0"	
1.9	Section 1	Update to DD2.0_UI3.14	May 9th, 2018
	Section 3 Step 10	New screenshot that shows "About Development Desktop 2.0"	
2.0	Section 1	Update to DD2.0_UI3.18	March 5th, 2019
	Section 3 Step 10	New screenshot that shows "About Development Desktop 2.0"	
2.1	Section 1	Update to DD2.0_UI3.19	May 23rd, 2019
	Section 3 Step 10	New screenshot that shows "About Development Desktop 2.0"	
2.2	Section 1	Update to DD2.0_UI3.20	Jan. 10th, 2020
	Section 3 Step 10	New screenshot that shows "About Development Desktop 2.0"	

Bosch Sensortec GmbH  
 Gerhard-Kindler-Strasse 8  
 72770 Reutlingen / Germany

Contact@bosch-sensortec.com  
 www.bosch-sensortec.com

Modifications reserved | Printed in Germany  
 Specifications subject to change without notice